



The Tiiger's Eye



Utility Industry News and Views

Published by Tiiger Inc. Manufacturers of Utility
& Pole Pulling Equipment... Created by Linemen for Linemen
February 2012 edition www.Tiiger.com

Welcome to the February 2012 edition of The Tiiger's Eye...

A unique newsletter designed to keep Linesman and Operations Managers abreast of what's happening in the Utility field. If you have a story to tell whether it's personal, product oriented or simply tips you want to share please call us at 615.758.6046



Electrical Linemen: A Brief History

The occupation began with the widespread use of the telegraph in the 1840s. Telegraph lines could be strung on trees, but wooden poles were quickly adopted as the method of choice. The term 'lineman' was used for those who set wooden poles and strung the wire.

This new electrical power work proved to be much more hazardous than telegraph or telephone work because of the risk of electrocution. Between the 1890s and the 1930s, line work was considered one of the most hazardous jobs in existence. Approximately 1 in 3 linemen were killed on the job, mostly from electrocution. This led to the formation of labor organizations to represent the workers and advocate for their safety. Continued...



...Electrical Linemen: A Brief History

Better tools and protective equipment were produced as the occupation grew and safety became a primary concern. Some early equipment shows remarkable ingenuity even though it often provided only minimal protection.

In the United States, the rural electrification drive during the New Deal led to a wide expansion in the number of jobs in the electric power industry. Many power linemen during that period traveled around the country following jobs as they became available in tower construction, substation construction, and wire stringing.

Working as a Linesman was very lucrative at the time, owing to the high level of skill needed and the hazardous nature of the work, but the hazards and the extensive travel limited the appeal of the work. Often a lineman would finish one job with enough money to live on for several weeks or months before they would "boom out" to another job.

The occupation evolved during the 1940s and 1950's, as household electricity became more ubiquitous. As the public became more dependent on electricity, it became imperative that damaged power lines be repaired quickly. This led to an increase in the number of linemen needed to maintain power distribution circuits, and to keep them repaired in case of power outages, storms, or other emergencies. These maintenance linemen mostly stayed in one place and could settle down, although sometimes linemen could be called to travel to other states to help repair the damage from major storms such as hurricanes. Also during the 1950s, some electric lines began to be installed in underground tunnels, expanding the scope of the work. Safety standards and equipment have continued to improve; today, while still considered a somewhat hazardous occupation, line work is no longer as dangerous as it once was. [Page 2](#)

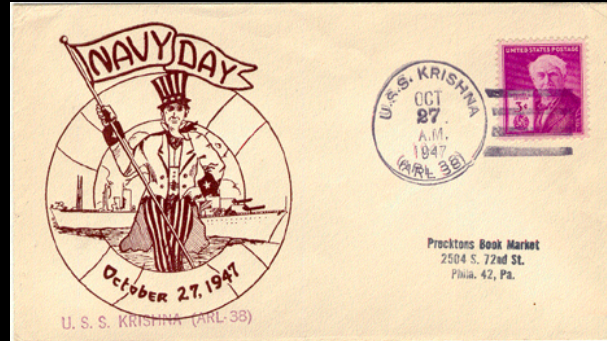


Speaking in the 40's and 50's...

Have you seen the new cars coming out next year? It won't be long before \$2,000.00 will only buy a used one.



Did you hear the post office is thinking about charging 7 cents just to mail a letter.



I'll tell you one thing, if things keep going the way they are, it's going to be impossible to buy a week's groceries for \$10.00.



Did you see where some baseball player just signed a contract for \$50,000 a year just to play ball? It wouldn't surprise me if someday they'll be making more than the President.



The fast food restaurant is convenient for a quick meal, but I seriously doubt they will ever catch on.

I'm afraid to send my kids to the movies any more. Ever since they let Clark Gable get by with saying DAMN in GONE WITH THE WIND, it seems every new movie has either HELL or DAMN in it.





Kosciusko REMC's Jeff Moore and Kelly Neace are two of 29 linemen selected to volunteer in Guatemala next year. (Photo By: Troy Cozad)

International News

Hoosier Linemen to Power Guatemala

By Victoria A. Rocha | ECT Staff Writer

Nine years ago, Tracie Trent adopted a son from Guatemala. Now, following her lead, the co-ops in her state are adopting a country.



In one of the largest projects undertaken by the NREC International organization Foundation, the Indiana Statewide Association of REC's has organized a volunteer team of 29 linemen and two co-op executives that will help expand access to electricity in Guatemala.

"This came out of my wish to give something back to the country that allowed us to adopt our son," said Trent, communications coordinator at the Statewide Association.

She pitched the idea to Bruce Graham, her CEO, and then to other co-op executives as a way to celebrate the 2012 International Year of Cooperatives.

Participants in "Hoosiers Power the World" will travel to Guatemala next September to expand access to electric service in the remote agricultural province of Huehuetenango.

"We will change lives forever—much like our rural electric pioneers did for families across the nation 75 years ago," Graham said. "We can now [move] it forward for some very remote areas of Guatemala that have never experienced the wonder of electricity, which most now take for granted."

Indiana co-op volunteers will consult with foundation staff in Guatemala next spring to define a work plan, which will include safety training, line extensions and consultations with utility managers.

"This won't be just a one-year thing," she said. "It will be a legacy project for Indiana co-ops."



Safety Reminders from Denton L. Jackson...

“After twenty six years of lineman experience, analyzing and studying accidents, OSHA rules, and presenting OSHA training with OSHA Investigators, I have developed my own personal safety rules to help prevent serious injury and death”



- Accidents can be prevented and the number one cause of accidents in the workplace is linemen working without their rubber gloves
- Always have your rubber gloves on when working on power lines both in the air and on the ground
- Always survey the job site for safety issues
- Follow the necessary safety precautions to insure your personal safety and the safety of your fellow workers
- Remember that if the line is not grounded the line is not dead
- Always wear all your (PPE) personal protective equipment and replace when necessary, such as helmets which should be replaced at regular intervals
- All live line work must be kept clean from contaminants and regularly tested for di-electric integrity
- Remember murphy's law



Put a Tiiger in your truck and increase efficiency and safety...

TIGER
BOLCA, BOUGHIER, TIGER

Tools Crews Really Use

- Ultra Light Weight Cylinder
- Swivel Assembly Pre-Assembles The Chain Providing Maximum Lift Per Stroke
- Base Plate Has The Lowest Possible Center Of Gravity Minimizing Tipping
- Optional Rack Plate Prevents Chain Roll-Up And Slippage

POLE PULLER

TIGER
BOLCA, BOUGHIER, TIGER

THE CUBE

By Tiiger

INTRODUCING "THE TIGER CUBE"
A Compact Hydraulic Sawing Platform
Hydraulic Pump Designed To Complement Our Model 4001D Ultra-Light Weight Pole Puller

Model 4001D Ultra-Light Weight Pole Puller
Model 4002D Hydraulic Sawing Platform

• 100 Degree Steering, allows for Movement Forward/Backward, 90° Left/Right

• Only 32" Wide

• Low pressure Turf Tires

• Equipped with Spaced 2" x 2" Spacers and Bronze Steering Bushings

• The Tiger Transformer Dolly

• Designed For Safe And Easy Handling

• 22 Pin Mount Transformer

• Can Accommodate Various Size Transformers

• Compact Design For Use In Small Spaces

TIGER Utility & Pole Pulling Equipment
Created by Linemen for Linemen

TWO-WHEEL DOLLY

• The Additional Pole Dolly feature Provides an Excellent Platform for Framing a Pole. The Roller Cradle allows for 360 Degree Rotation.

SPECIFICATIONS	MODEL 1005A
Height Overall with Cradle	27.54 inches
Width	22 inches
Length (No Handle)	23.14 inches
Deck Capacity	8000 pounds
Steering	180 Degree
Height (Load)	151 pounds
Height (No Load)	41 pounds
Capacity	3,270 pounds

• 180 Degree Steering, allows for Movement Forward/Backward, 90° Left/Right

• Only 32" Wide

• Low pressure Turf Tires

• Equipped with Spaced 2" x 2" Spacers and Bronze Steering Bushings

Load Deck & Dolly ▶

TIGER
BOLCA, BOUGHIER, TIGER

The Tiger Transformer Dolly

Our Compact Dolly Packs A Big Punch!

• Constructed With High Yield Strength Steel

• The Tiger Transformer Dolly

• Designed For Safe And Easy Handling

• 22 Pin Mount Transformer

• Can Accommodate Various Size Transformers

• Compact Design For Use In Small Spaces

TIGER
BOLCA, BOUGHIER, TIGER

THE CAGE

Designed as a perfect organizer for the **TIGER Model 4001D Pole Puller** with Components

- Full width hinge preventing any misalignment of the cover
- Handles positioned on the top and on each side
- Constructed with 1/8 inch steel plate for durability

• The CAGE STORES EVERYTHING WITH EASE!

TIGER
BOLCA, BOUGHIER, TIGER

THE CUBE II

"The Power House" by Tiiger

INTRODUCING "The Power House" by Tiiger

More Power
More Versatility
The Same Reliability
You've Used In From Tiiger

Model 4002D Hydraulic Sawing Platform
Model 4001D Ultra-Light Weight Pole Puller

• 100 Degree Steering, allows for Movement Forward/Backward, 90° Left/Right

• Only 32" Wide

• Low pressure Turf Tires

• Equipped with Spaced 2" x 2" Spacers and Bronze Steering Bushings

• The Tiger Transformer Dolly

• Designed For Safe And Easy Handling

• 22 Pin Mount Transformer

• Can Accommodate Various Size Transformers

• Compact Design For Use In Small Spaces

• The Tiger Universal Dolly

• Designed To Accommodate Both Pole Mounted & Side Mounted Transformers

TIGER
BOLCA, BOUGHIER, TIGER

The Tiger Universal Dolly

Our Most Versatile Dolly Packs A Big Big Punch!

• Designed To Accommodate Both Pole Mounted & Side Mounted Transformers

• The TIGER UNIVERSAL DOLLY

• Unique Three Wheel Design Provides An Extremely Stable

• Load Platform

• Easily Positioned For Loading And Unloading

• Equipped With Low Pressure Turf Tires

• Equipped With Spaced 2" x 2" Spacers and Bronze Steering Bushings

• Constructed With High Yield Steel

TIGER
BOLCA, BOUGHIER, TIGER

LOAD DECK & DOLLY

• The Safe and Most Efficient Choice in Material Handling Equipment

SPECIFICATIONS	MODEL 1006A
Height	29 inches
Width	22 inches
Length (No Handle)	25 inches
Deck Capacity	8000 pounds
Height (Complete Assembly)	360 pounds
Height (Load Deck)	125 pounds
Height (Without Two Wheel Dolly)	115 pounds (w/ 22" handle)
Height (22" Handle)	8 pounds

• Deck Attaches in Just Seconds to the Two-Wheel Transformer Dolly

• 180 Degree Steering, allows for Movement Forward/Backward, 90° Left/Right

• Supplied with a 22" Handle Assembly for Easy Handling

• 1,000 Pound Capacity

• Constructed with High Yield Steel

Tiiger Products can be Modified or Custom Designed to fit your Specific Applications.

TIGER

For more information on Tiiger products and services visit our website www.tiiger.com or call us at 615-758-6046. We would also like very much to have you contribute to our newsletter and or let us know what interests you.